



MasterConsole CAT

Great KVM performance plus four models to choose from

- MCCAT18: single user, for up to 8 servers
- MCCAT116: single user, for up to 16 servers
- MCCAT28: dual user, for up to 8 servers
- MCCAT216: dual user, for up to 16 servers

Take control of your servers with our simple yet full-featured Cat5 KVM switch.

Reclaim precious space while you boost productivity

If your small to midsize server room or data center is getting too cluttered, consolidate your equipment with a Raritan MasterConsole CAT Cat5 KVM switch. It provides one or two users centralized control from a single work station. Individual models control up to 8 or 16 servers, and switches can be cascaded to control up to 256 servers at distances of up to 45 meters.

Our MasterConsole CAT Switch:

- ▶ Works with every leading server – Microsoft Windows® NT, Windows Me, Windows 2000, Windows XP, Windows 2003, Windows Vista®, Novell® NetWare®, UNIX®, Linux,® Mac® and Sun™⁽¹⁾
- ▶ Saves you space and allows easier cabling with Cat5/6 cabling. IT administrators have the choice of either a) using industry's first and only fixed length Cat5 MCUTP cable with integrated computer interface module (CIM) to connect to servers within 6 meters, or b) using CIMs to connect to servers up to 45 meters away
- ▶ Enhances flexibility-with the two-user MasterConsole CAT unit, the second user can be located up to 30 meters away from the KVM switch, enabling "lights out" access to the server room

With these features and more, MasterConsole CAT is the ideal solution for maintenance, administration, running GUI applications, troubleshooting – even rebooting your mission-critical servers.

(1) Mac and Sun supported by 2-user models only

Bulletproof reliability and performance

MasterConsole CAT is engineered for dependability:

- ▶ It features a dedicated, intelligent processor at each port so each connected server "sees" its own keyboard and mouse, preventing lockups
- ▶ Our unique "keep-alive" design ensures nonstop server operation in case of power loss to the switch
- ▶ It supports high-resolution video – up to 1600 x 1200
- ▶ It ensures authorized access via password security

Leading-edge technology and scalability

MasterConsole CAT is designed for flexibility:

- ▶ MasterConsole CAT allows server selection from the front panel channel buttons and by name from pop-up, on-screen menus
- ▶ It allows you to store multiple user names and profiles
- ▶ MasterConsole CAT provides on-site, flash firmware upgrades
- ▶ It can be cascaded to control up to 256 servers at distances of up to 45 meters
- ▶ The two-user model supports a user station that can be placed outside the server room (up to 30 meters away from the switch) for "lights-out" access
- ▶ Plus AutoSkip bypasses inactive channels, and AutoScan scans servers at variable rates

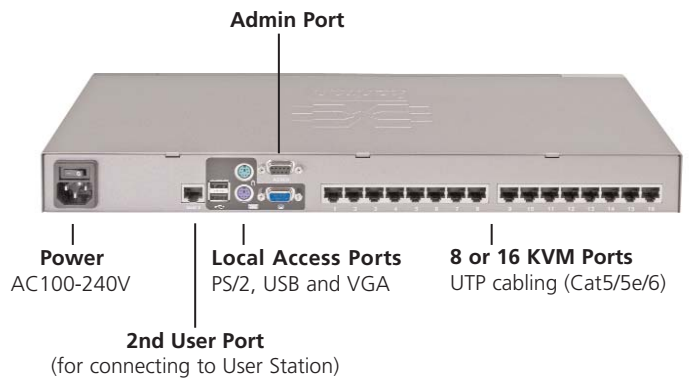
Specifications

MasterConsole® CAT Main Units				
Part Number	MCCAT18	MCCAT116	MCCAT28	MCCAT216
Description	Single user, eight-port Cat5 KVM switch	Single user, sixteen-port Cat5 KVM switch	Dual user, eight-port Cat5 KVM switch	Dual user, sixteen-port Cat5 KVM switch
Users	1	1	2	2
Ports	8	16	8	16
User Ports	VGA - HDB-15 (F) x 1 (Blue)	VGA - HDB-15 (F) x 1 (Blue)	VGA - HDB-15 (F) x 1 (Blue)	VGA - HDB-15 (F) x 1 (Blue)
	Keyboard - PS/2 mini-din 6-pin x 1	Keyboard - PS/2 mini-din 6-pin x 1	Keyboard - PS/2 mini-din 6-pin x 1 or USB Type A x 1	Keyboard - PS/2 mini-din 6-pin x 1 or USB Type A x 1
	Mouse - PS/2 mini-din 6-pin x 1	Mouse - PS/2 mini-din 6-pin x 1	Mouse - PS/2 mini-din 6-pin x 1 or USB Type A x 1	Mouse - PS/2 mini-din 6-pin x 1 or USB Type A x 1
	FW Upgrade - DB9 (F) x 1	FW Upgrade - DB9 (F) x 1	FW Upgrade - DB9 (F) x 1	FW Upgrade - DB9 (F) x 1
Max Distance Between User and Switch	50 ft (15m)	50 ft (15m)	100 ft (30m) when used with MCCAT-UST, 650 ft (195m) when used with P2-EUST (Paragon II Enhanced User Station)	100 ft (30m) when used with MCCAT-UST, 650 ft (195m) when used with P2-EUST (Paragon II Enhanced User Station)
Weight	2.45Kg	2.46Kg	2.45Kg	2.46Kg
Power	100V – 240V auto sensing 20 Watts	100V – 240V auto sensing 20 Watts	100V – 240V auto sensing 20 Watts	100V – 240V auto sensing 20 Watts
Dimensions	17.32" x 6.57" x 1.69" 440mm x 167mm x 43mm	17.32" x 6.57" x 1.69" 440mm x 167mm x 43mm	17.32" x 6.57" x 1.69" 440mm x 167mm x 43mm	17.32" x 6.57" x 1.69" 440mm x 167mm x 43mm
Video Resolution	1600 x 1200 @ 60Hz up to 100 ft (30m), 1280 x 1024 @ 75Hz up to 150 ft (45m)	1600 x 1200 @ 60Hz up to 100 ft (30m), 1280 x 1024 @ 75Hz up to 150 ft (45m)	1600 x 1200 @ 60Hz up to 100 ft (30m), 1280 x 1024 @ 75Hz up to 150 ft (45m), 1600 x 1200 @ 85Hz up to 650 ft (195m) thru P2-EUST	1600 x 1200 @ 60Hz up to 100 ft (30m), 1280 x 1024 @ 75Hz up to 150 ft (45m), 1600 x 1200 @ 85Hz up to 650 ft (195m) thru P2-EUST
Supported Platforms	MS-DOS, Windows 2000/2003/NT/Me/XP/Vista, Linux (Red Hat, Novell Suse) and SCO UNIX	MS-DOS, Windows 2000/2003/NT/Me/XP/Vista, Linux (Red Hat, Novell Suse) and SCO UNIX	MS-DOS, Windows 2000/2003/NT/Me/XP/Vista, Linux (Red Hat, Novell Suse), SCO UNIX, Mac OS9/OSX and Sun™ Solaris	MS-DOS, Windows 2000/2003/NT/Me/XP/Vista, Linux (Red Hat, Novell Suse), SCO UNIX, Mac OS9/OSX and Sun™ Solaris

MCCAT216 Front View



MCCAT216 Rear View



MasterConsole CAT User Station	
Part Number	MCCAT-UST
Supported Switches	MCCAT28, MCCAT216
User Ports	VGA - HDB-15 (F) x 1 (Blue)
	Keyboard - PS/2 mini-din 6-pin x 1 or USB Type A x 1
	Mouse - PS/2 mini-din 6-pin x 1 or USB Type A x 1
CAT5 Port	RJ-45 x 1
	FW Upgrade - DB9 (F) x 1
Dimensions	7.18" x 3.94" x 1.17", 182.6mm x 100mm x 29.8mm
Weight	540g
Power	DC 6V

MCCAT-UST Front View



Power LED

USB Keyboard and Mouse Ports

MCCAT-UST Rear View



Power DC 6V

VGA Port

Admin Port

PS/2 Keyboard and Mouse Ports

Cat5 Port
(Connect to 2nd User Port on MCCAT28 or MCCAT216)

Computer Interface Modules (CIM)		
Part Number	Properties	Dimensions
MCIM-PS/2	HDB 15 x 1, PS/2 mini-din 6-pin x 2	1.3" x 3.0" x 0.6", 33mm x 76mm x 15mm
MCIM-USB	HDB 15 x 1, USB Type A x 1	1.3" x 3.0" x 0.6", 33mm x 76mm x 15mm
DCIM-USBG2 (for Sun USB)	HDB 15 x 1, USB Type A x 1	1.3" x 3.0" x 0.6", 33mm x 76mm x 15mm

MCIM-PS/2



MCIM-USB



DCIM-USBG2



Cat5 MCUTP Cables		
Part Number	Description	Specification
MCUTP06-PS2	KVM UTP cable for PS/2, 0.6M, 2 feet	RJ45 <-> HDB-15M, mini-din 6 x 2
MCUTP20-PS2	KVM UTP cable for PS/2, 2M, 6.5 feet	RJ45 <-> HDB-15M, mini-din 6 x 2
MCUTP40-PS2	KVM UTP cable for PS/2, 4M, 13 feet	RJ45 <-> HDB-15M, mini-din 6 x 2
MCUTP60-PS2	KVM UTP cable for PS/2, 6M, 20 feet	RJ45 <-> HDB-15M, mini-din 6 x 2
MCUTP06-USB	KVM UTP cable for USB, 0.6M, 2 feet	RJ45 <-> HDB-15M, USB type A
MCUTP20-USB	KVM UTP cable for USB, 2M, 6.5 feet	RJ45 <-> HDB-15M, USB type A
MCUTP40-USB	KVM UTP cable for USB, 4M, 13 feet	RJ45 <-> HDB-15M, USB type A
MCUTP60-USB	KVM UTP cable for USB, 6M, 20 feet	RJ45 <-> HDB-15M, USB type A
MCUTP06-SUSB	KVM UTP cable for Sun USB, 0.6M, 2 feet	RJ45 <-> HDB-15M, USB type A
MCUTP20-SUSB	KVM UTP cable for Sun USB, 2M, 6.5 feet	RJ45 <-> HDB-15M, USB type A
MCUTP40-SUSB	KVM UTP cable for Sun USB, 4M, 13 feet	RJ45 <-> HDB-15M, USB type A
MCUTP60-SUSB	KVM UTP cable for Sun USB, 6M, 20 feet	RJ45 <-> HDB-15M, USB type A

MCUTP-PS/2



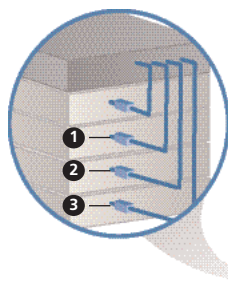
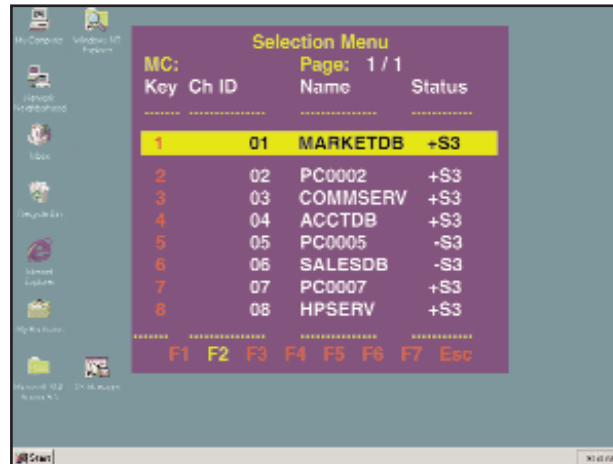
MCUTP-USB



MCUTP-SUSB

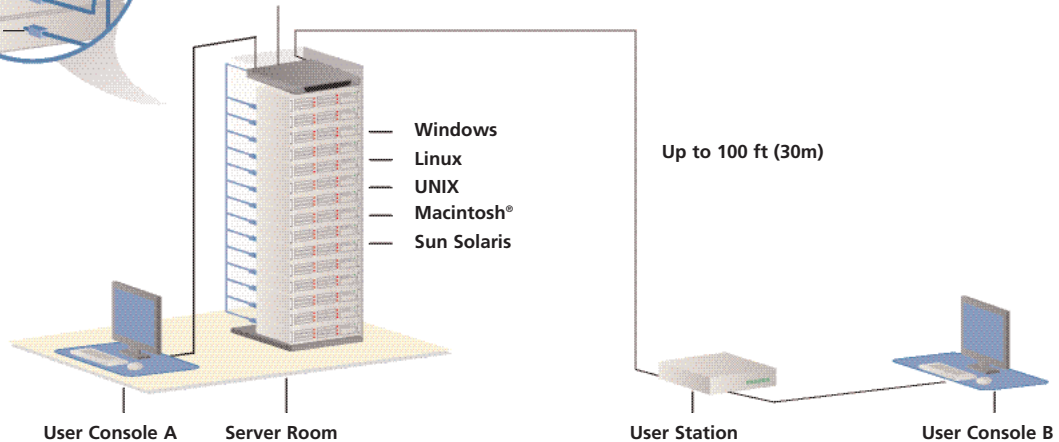


On-screen user interface makes server management easy.



- 1 Computer Interface Module (CIM)
- 2 Cat5 Cable
- 3 MCUTP Cable

2-User MasterConsole CAT



Ready to manage smarter? Do it with Raritan's MasterConsole CAT.

Call +31 (0)10 284 4040 or visit Raritan.eu/masterconsole-cat

Raritan provides secure IT infrastructure management solutions that increase data center efficiency and productivity by delivering integrated in-band and out-of-band energy management and server access and control. Raritan's power management software, intelligent PDU, environmental sensors, KVM, serial console and centralized management products are in use at over 50,000 locations worldwide.

Raritan's OEM division provides embedded hardware and firmware for server and client management, including intelligent energy management, KVM over IP, IPMI and other industry standards-based management applications. For more information, please visit Raritan.eu

© 2009 Raritan Inc. All rights reserved. Raritan®, Know more. Manage smarter.™ and MasterConsole® are registered trademarks of Raritan Inc. or its wholly-owned subsidiaries. All others are registered trademarks or trademarks of their respective owners. Specifications are subject to change without notice.