



ACCURATE ASSET MANAGEMENT

EVEN MODEST-SIZE DATA CENTERS HAVE AN ENORMOUS NUMBER OF IT ASSETS, FROM SERVERS TO STORAGE NETWORKING EQUIPMENT.

Tracking these assets is often accomplished using Excel[®] spreadsheets and Visio[®] diagrams, or by developing a home-grown system, which can be very labor intensive. However, if you miss a few moves, adds or changes, it can become a challenge to know what you have and where it's located. And while RFID tags have also been used to track assets, RFID readers are unreliable if they are closely packed in a metallic environment such as a rack. They can be expensive, too, especially when tagging hundreds of devices.

Raritan's Asset Management Tags (AMTs) and Asset Management Sensors (AMSs) provide data center operators with an accurate, automated, real-time inventory of all IT assets and their locations, down to the 1U level. Each tag and sensor integrates with DCIM software to easily track assets, determine capacity in a number of areas, and manage adds, moves, or changes.

WHY INTELLIGENT REAL-TIME ASSET MANAGEMENT?

- Upward of 25% of IT assets go missing
- Do you know what you have and where it's located?
- Can you detect asset moves, adds, changes?
- Is your asset database (Configuration Management Database) accurate?
- How long does it take to do a physical inventory?
- Can you pass audits?

Intelligent asset management automates it asset tracking to help you better understand exactly what you have and where it's located.

ASSET MANAGEMENT TAG (AMT)

- Unique electronic ID chip
- Unique scannable ID bar code
- Industrial adhesive patch to attach tag to ID device
- Magnetic connector to attach to the AMS

ASSET MANAGEMENT SENSOR (AMS)

- 42U, 45U, 48U, and 54U rack options
- Magnetic connector for AMT, one per 1U space
- Multicolored LEDs, one per 1U space
- Magnetically mounts to existing racks
- Connects to Raritan PX[®] intelligent rack PDUs, PX inline meters and SRC smart rack controllers

KNOW EXACTLY WHAT YOU HAVE AND WHERE YOU HAVE IT, DOWN TO 1U



Asset Management Tag (AMT)

AMT asset tag with unique ID chip and bar code with adhesive patch for IT devices.



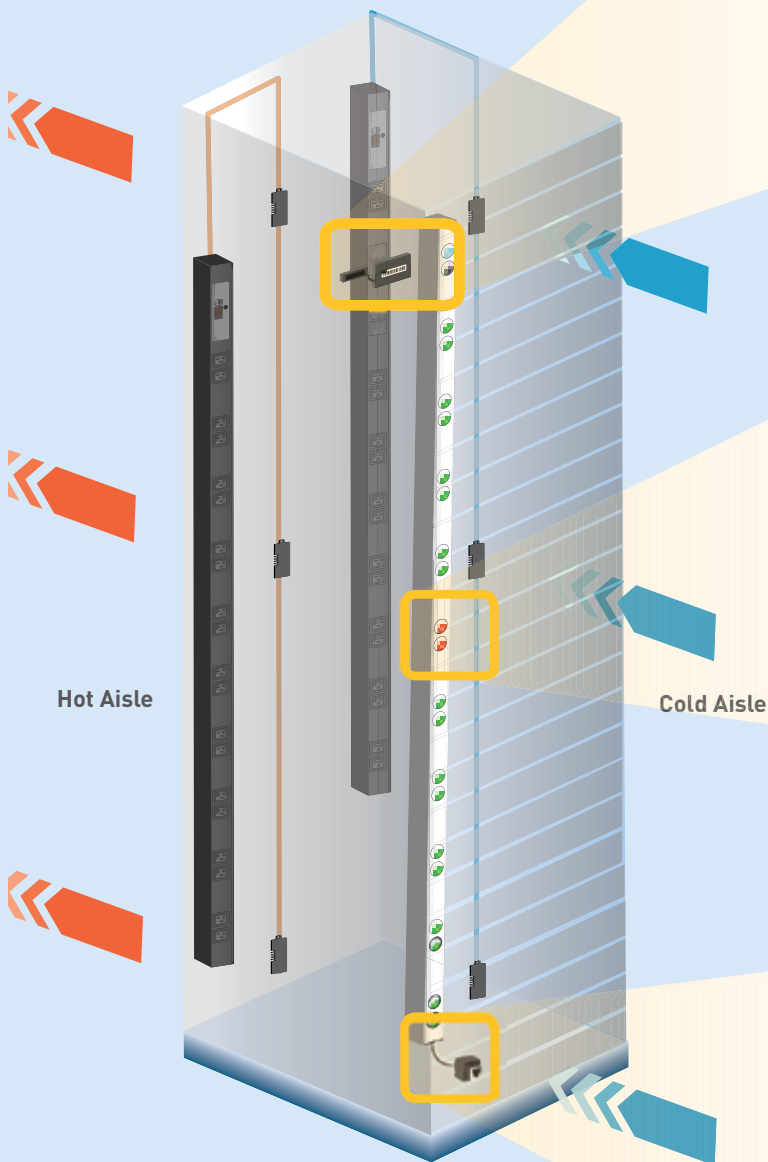
Asset Management Sensor (AMS)

Customizable RGB color LED for each 1U space



Asset Gateway: Raritan SRC or PX PDU

AMS sensor showing port for connection to Raritan's PX or SRC SNMP gateways



HOW DOES IT WORK?



ASSET MANAGEMENT TAG (AMT)

The asset tag is based on a 1-wire unique ID chip that has a 64-bit value. The ID chip is molded in a round plastic carrier together with a metal ring and a gold contact to provide an electrical connection to the asset tag reader, the AMS.

The metal ring allows the AMT to connect to the asset tag reader via magnetic force. Associated with the unique ID is the IT assets' record, where a variety of asset information can be stored, including serial number, repair records, maintenance agreement terms, lease terms, etc.

ASSET MANAGEMENT SENSOR (AMS)

The AMS segments are modular and have a magnetic backing to allow easy installation on metal rack rails. The AMS reader provides a round, magnetic connector at each 1U position to provide a connection for asset tags (AMTs).

A port is available on one end to provide a connection to Raritan's SNMP gateways. The AMS senses the AMT's unique ID as well as the connected asset's rack location, in 1U increments, and provides that information to DCIM software or third-party asset management tools. The sensor can be installed in front of the rack on the left- or right-hand side.

AMS GATEWAY: RARITAN SRC OR PX IPDU

The AMS provides a communication interface to Raritan's SRC smart rack controllers and PX intelligent PDUs. These act as the AMS SNMP gateway, connected via standard UTP cable and RJ-45 interconnects. The AMS is powered by the SRC or PX, so no extra power supply is needed.

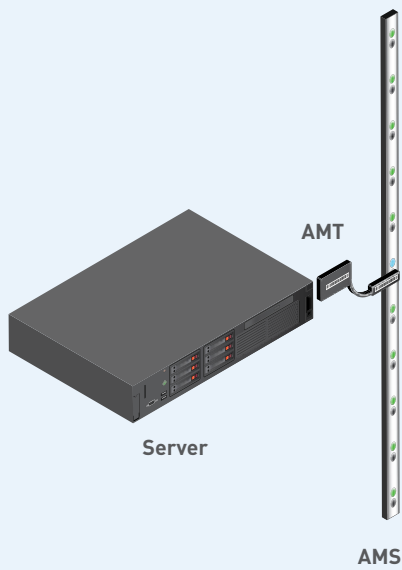
The SNMP interface can be used by any third-party asset management system. It offers the following features:

- Reading all asset tag IDs per rack and their physical locations within a rack
- SNMP alert in case of an asset tag ID change event (asset tag removed and/or added, ID changed)
- Setting an RGB color LED indicator for each 1U slot

This can be used to implement a custom-color indicator, controlled-change management process, e.g., a red blinking LED indicates a server maintenance request.

Model	Description
AMS-42	Asset Management Sensor kit for 42U height rack. 1 connector and 1 RGB LED per U space
AMS-45	Asset Management Sensor kit for 45U height rack. 1 connector and 1 RGB LED per U space
AMS-48	Asset Management Sensor kit for 48U height rack. 1 connector and 1 RGB LED per U space
AMS-54	Asset Management Sensor kit for 54U height rack. 1 connector and 1 RGB LED per U space
AMT-100	100-pack of intelligent Asset Management Tags for AMS-nn with electronic ID and bar code
AMT-5	5-pack of intelligent Asset Management Tags for AMS-nn with electronic ID and bar code.
AMS-B16	16 port Asset Management Sensor Kit for blades. 1 x RJ45 connector and 1 RGB LED per U space. Asset Tags (AMT) sold separately. Prerequisite applicable. Contact us for more information.
AMS-B8	8 ports Asset Management Sensor Kit for blades. 1 x RJ45 connector and 1 RGB LED per U space. Asset Tags (AMT) sold separately. Prerequisite applicable. Contact us for more information.

PHYSICAL ASSETS

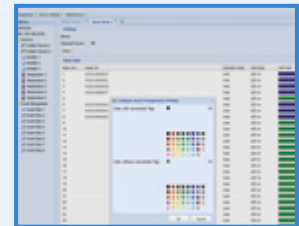


NETWORK CONNECTION



- 1 Connect AMS to SRC Smart Rack Controller
- or
- 2 Connect AMS directly to PX iPDU

END-USER INTERFACE



SRC and PX GUI



Cabinet Elevation



Third-Party Asset Management System

Visit www.raritan.com/ap/amt-ams