

New feature “My Company Library” has been introduced in dcTrack 3.0.

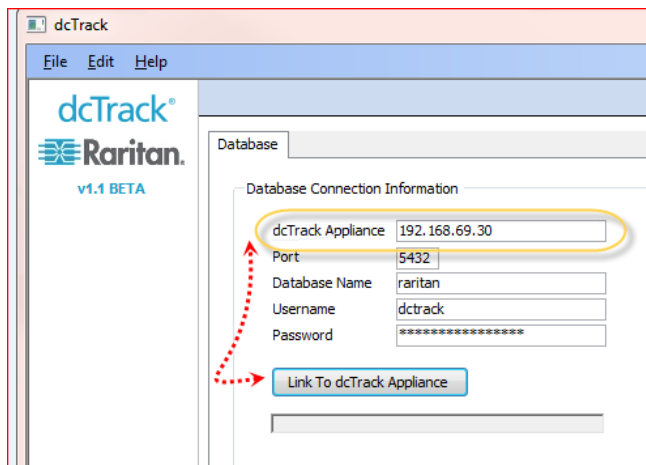
Following link explains how to enable Show standard models only option in dcTrack Filter models list for end-user and keep make/model consistent for Admin and reporting.

<http://web1.raritan.adxstudio.com/help/dcTrack/v3.0.0/en/#27533>

With this option enabled, when adding new items into dcTrack, you are only presented with a filtered list of model items that your data center uses frequently vs. the entire 300 HP devices, or 200 Dell, etc.

Engineering has provided Set My Library tool which will all the ‘used’ make / models within your database, and then Export a list of them or set the My Standard flag = True

- Extract attached ZIP file to obtain tool (file with mde extension)
- Double click to launch tool
- Enter dcTrack Appliance IP address



- Navigate to Models option and select appropriate option as desired.

