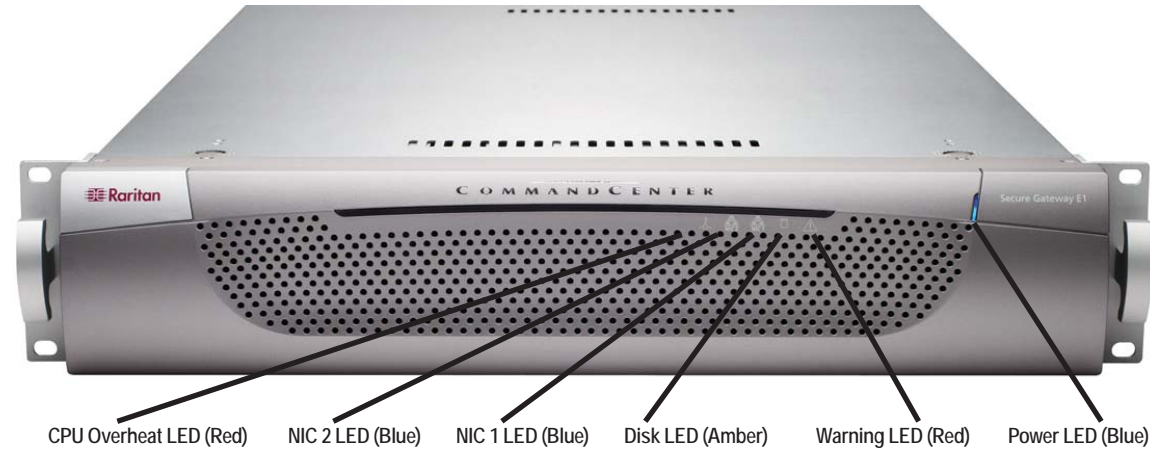


CommandCenter Secure Gateway Overview

Congratulations on your purchase of CommandCenter Secure Gateway (CC-SG) E1 unit, Raritan's management software platform engineered to consolidate secure access and control of IT devices. This document provides instructions for getting your CC-SG up and running in a minimal amount of time. Prior to installing a CC-SG, you should prepare the devices that will be managed by CC-SG. Please refer to the **Raritan Digital Solution Deployment Guide** for additional information.



I. Unpack CC-SG

With your shipment, you should receive:

- | | |
|---|--|
| (1) CommandCenter Secure Gateway E1 unit | (1) Printed Quick Installation & Setup Guide |
| (1) CommandCenter Secure Gateway E1 front bezel | (1) Raritan User Documentation CD-ROM |
| (1) Rack mount kit | (1) Registration and Warranty papers |
| (2) Power supply cord | |
| (1) CAT 5 network cable | |

Technical Support

Please contact Raritan U.S. at 800.724.8090 between 8:00 AM and 8:00 PM EST or call your local Raritan office if you do not receive all items listed here.

Determine Rack Location

Decide on a location in the rack for CC-SG, in a clean, dust-free, well-ventilated area. Avoid areas where heat, electrical noise, and electromagnetic fields are generated and place it near a grounded power outlet.

II. Rack-mount CC-SG

Before rack-mounting CC-SG, unplug all power cords and remove all external cables and devices.

Rack Mount Kit Contents

The rack mount kit contains:

2 pairs of rack rails—Each pair consists of two sections: an inner rail that attaches to the CC-SG unit, and an outer rail that attaches to the rack. A sliding rail guide is positioned between the inner and outer rails. The sliding rail guide should remain attached to the outer rail.

- 1 pair of short front brackets
- 1 pair of long rear brackets
- Short screws, Long screws
- Washers

Install Inner Rails onto CC-SG Unit

1. Slide the inner rail out from the outer rail as far as it will go. Press the locking tab to release the inner rail from the outer rail and then pull the inner rail completely out. Do this for both pairs of rack rails.
2. There are five holes on each inner rail that correspond to the five rail hooks on each side of the CC-SG unit. Align each inner rail's holes with the rail hooks, and then press each rail against the unit to attach it.
3. Slide each rail toward the front of the unit until you hear a click.
4. Attach the inner rails to the CC-SG unit with short screws.

Install Outer Rails onto Rack

The outer rails attach to the rack. The outer rails will fit racks that are 28-32 inches deep.

1. Attach the short front brackets to each outer rail with short screws.
2. Slide each long rear bracket into the opposite end of each outer rail. Attach the long rear brackets to the outer rails with short screws.
3. Adjust the entire rail unit length to fit the rack depth.
4. Attach each bracketed end of the outer rail to the rack with washers and long screws.

Install CC-SG into the Rack

Once the rails are attached to both the CC-SG unit and the rack, install CC-SG into the rack.

1. Fully extend the rack rails, and then line up the rear of the inner rails with the front of the rack rails.
2. Slide the CC-SG unit into the rack until you hear a click. You may have to depress the locking tabs when inserting the CC-SG unit into the rack.

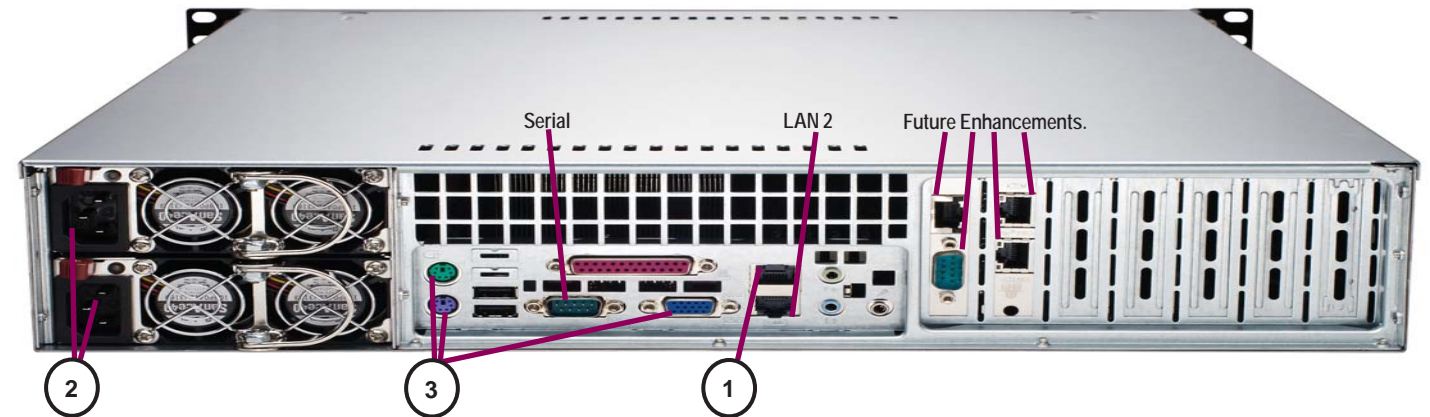
Locking Tabs Information

- Both inner rails have a locking tab:
- To lock the CC-SG unit into place when pushed fully into the rack.
 - To lock the CC-SG unit into place when extended from the rack.

III. Connect Cables

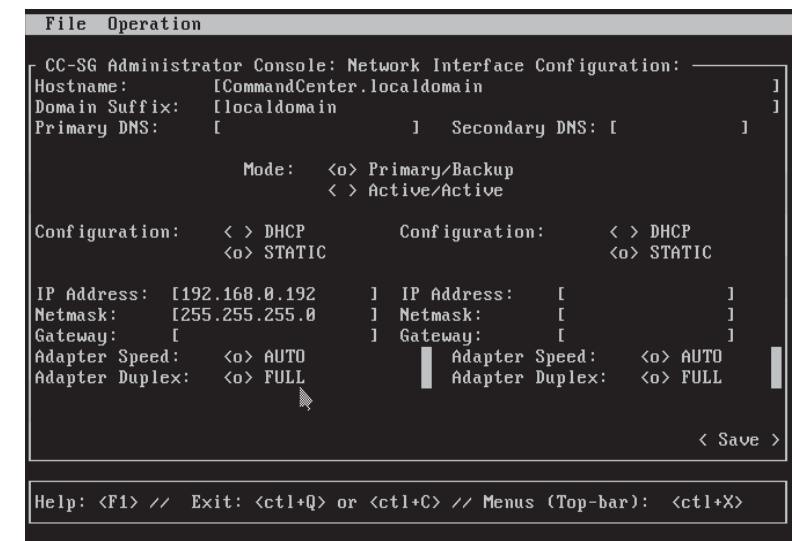
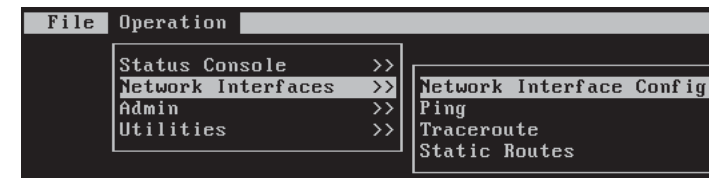
Once the CC-SG unit is installed into the rack, you can connect cables and set the CC-SG's IP address. Numbers on the diagram below correspond to the step numbers in this procedure.

1. Connect the CAT 5 network LAN cable to the LAN 1 port on the rear panel of the CC-SG unit. It is strongly recommended to connect a second CAT 5 network LAN cable to the LAN 2 port. Connect the other end of each CAT 5 cable to the network.
2. Attach the 2 included AC power cords to the power ports on the rear panel of the CC-SG unit. Plug the other ends of the AC power cords into independent UPS protected outlets.
3. Connect KVM cables to the corresponding ports on the rear panel of the CC-SG unit.



IV. Log in to Local Console to Set CC-SG IP Address

1. Power ON CC-SG by pressing the POWER button on the front of the CC-SG unit.
2. Attach the front bezel by snapping it onto the front of the CC-SG unit.
3. When you see the **CommandCenter** login prompt on the video output, log in as **admin/raritan**, and then type CTRL+X. Usernames and passwords are case-sensitive. You will be prompted to change the local console password.
4. On the **Operation** menu, click **Network Interfaces** and then select **Network Interface Config**.



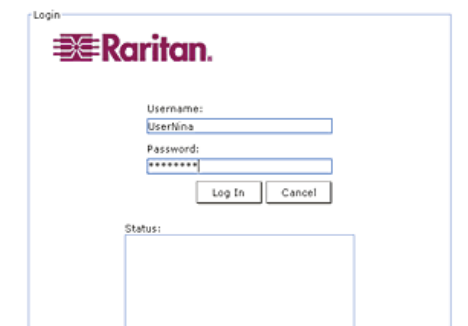
5. The Administrator Console appears.
6. In the **Configuration** field, select **DHCP** or **Static**. If you select **Static**, type a static IP address. If needed, specify DNS servers, netmask, and gateway address.
6. Select **Save**. Please wait a few minutes as CC-SG restarts.

Default CC-SG Settings:
 IP Address: 192.168.0.192
 Subnet Mask: 255.255.255.0
 Username/Password: admin/raritan

V. Log in to CC-SG

Once CC-SG has restarted, you can log in to CC-SG from a remote client.

1. Launch a supported browser and type the URL of the CC-SG: **http://<IP address>/admin**. For example, **http://192.168.0.192/admin**.
2. When the security alert window appears, click Yes.
3. You will be warned if you are using an unsupported Java Runtime Environment version. Follow the prompts to either download the correct version, or continue.
4. The Login window appears.
5. Type the default username (admin) and password (raritan), and then click Login.
6. The CC-SG administrative GUI appears.



Refer to the **CommandCenter Secure Gateway Deployment Guide** for information on deploying other Raritan devices for CC-SG management. Refer to the **CommandCenter Secure Gateway Administrator Guide** for information on configuring CC-SG.