

Device". Press the "Query Device" button to display the preconfigured values of the network configuration. The values are displayed in the text fields located above. If necessary, adjust the network settings to your needs. To save the changes enter an user name and an according password. Then press the "Setup Device" button. To close the window and accept the changes, press the "OK" button, otherwise "Cancel".

### Web Interface

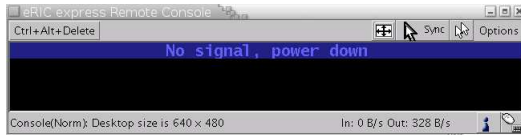
The eRIC express may be accessed using a standard Java enabled web browser. You may use the HTTP protocol or a secure encrypted connection via HTTPS. Just enter the configured IP address of the eRIC express into your web browser. The initial login settings are:

Login: *super*, Password: *pass*

Changing these settings to user specific values is strongly recommended and can be done on the User Settings page.

### Remote Console

The Remote Console is the redirected screen, keyboard and mouse of the remote host system in which the eRIC express is installed. The web browser which is used for accessing the eRIC express has to supply a Java Runtime Environment version 1.1 or higher. However, we strongly recommend to install Sun JVM 1.4. The Remote Console will behave exactly the same way as if you were sitting directly in front of the screen of your remote system. That means that both the keyboard and mouse can be used in the usual way. Open the console by clicking the preview picture on the main site of the HTML frontend. The picture below shows the top of the Remote Console.

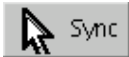


There are some options to choose from the menu, the important ones are the following:



#### Auto Adjust Button

If the video displayed is of bad quality or distorted in some way, press this button and wait a few seconds while the eRIC express tries to adjust itself for the best possible video quality.



#### Sync Mouse

Choose this option in order to synchronize the local with the remote mouse cursor. This is especially necessary when using accelerated mouse settings on the host system. In general, there is no need to change mouse settings on the host. \*)

\*) **Note:** At first start, if the local mouse pointer is not synchronized with the remote mouse pointer, press the Auto Adjust Button once.

# eRIC express

## Quick Start Guide

Based on firmware 04.00.03  
Last revision: September 21, 2005

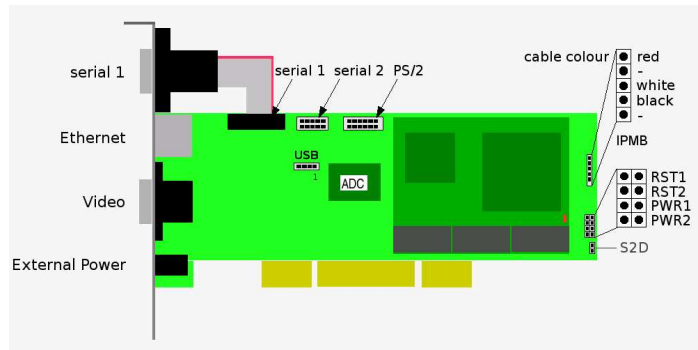


We do not ship a printed manual on default. For detailed information please refer to the electronic manual provided as PDF file on the enclosed CD ROM. If you like to obtain a printed version of the manual, do not hesitate to send an email to [sales@peppercon.com](mailto:sales@peppercon.com) in order to receive your printed copy.

Copyright © 2004-2005 Peppercon AG, Zwickau (Saxony)  
<http://www.peppercon.com>

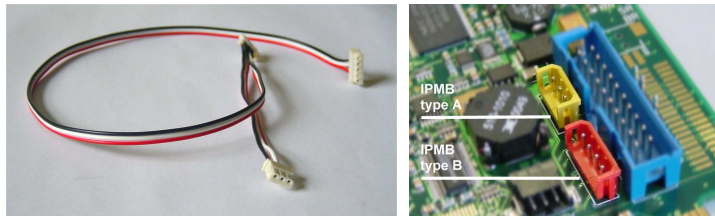
## Mounting

Mount the eRIC express into a free PCI slot. Connect the internal cables:



There are two options to enable reset/power:

### (a) IPMI over IPMB



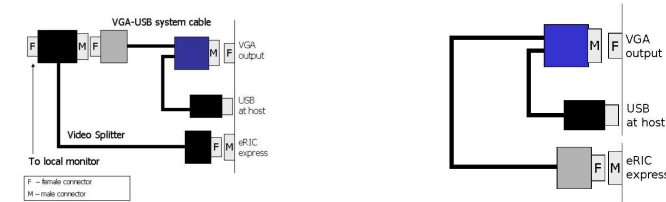
### (b) If there are separate pins for the reset and power switch connectors on the motherboard, refer to the motherboard manual to find the right connectors for the front panel reset/power switch buttons:

- 1 Disconnect the reset cable from the motherboard and connect it to the connector RST1 of the eRIC express.
- 2 Connect the connector RST2 on the eRIC express using the enclosed reset cable (two wires, black/red) with the reset connector on the motherboard.
- 3 Disconnect the power switch cable from the motherboard and connect it to the connector PWR1 on the eRIC express.
- 4 Connect the connector PWR2 on the eRIC express using the enclosed power switch cable (two wires, black/red) with the power switch on the motherboard.

In case your motherboard does not have single pins for reset and power switch, you may use one of the front panel adapters which are offered. In case those adapters do not fit into your system or in case you need further assistance, contact the support via email to [support@peppercon.com](mailto:support@peppercon.com).

1 Use the video cable to connect the VGA output of the host with the VGA input on the eRIC express. In case a local video display is required, please use the optional video splitter (item no. #7020042) as shown below. Make sure that the connector with screws is mounted to the computer VGA out.

2 Connect the USB plug with one of the host's own USB connectors.



3 Connect the Ethernet jack to a hub or switch using an UTP 5 cable if required.

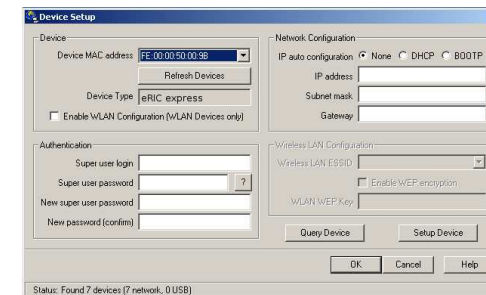
4 If needed, connect your optional external power supply to the eRIC express. The LED on the processor module indicates that the eRIC express card is functioning properly.

## Initial Network Configuration

Initially, the eRIC express network interface is configured with the parameters shown here:

Parameter	IP auto configuration	IP address	Net mask	Gateway	IP access control
Value	DHCP	-	255.255.255.0	none	none

If this initial configuration does not meet your local requirements, use the setup tool to adjust the values to your needs. The setup tool requires a MS Windows 2000 or higher and can be found on the CD ROM delivered with this package. You can follow the procedure described below. For other OS you may either use the web frontend or configure the eRIC express via serial console. Start the setup tool from the CD ROM on the computer that the eRIC express is installed. A window opens as seen below:



On the upper left corner, the MAC address of the eRIC express is displayed. To detect the MAC address manually, press the button "Refresh Devices". The displayed MAC address is the same MAC address printed on the white sticker placed on the back of the eRIC express.

On the lower right corner of the window, there are two buttons: "Query Device" and "Setup Device".